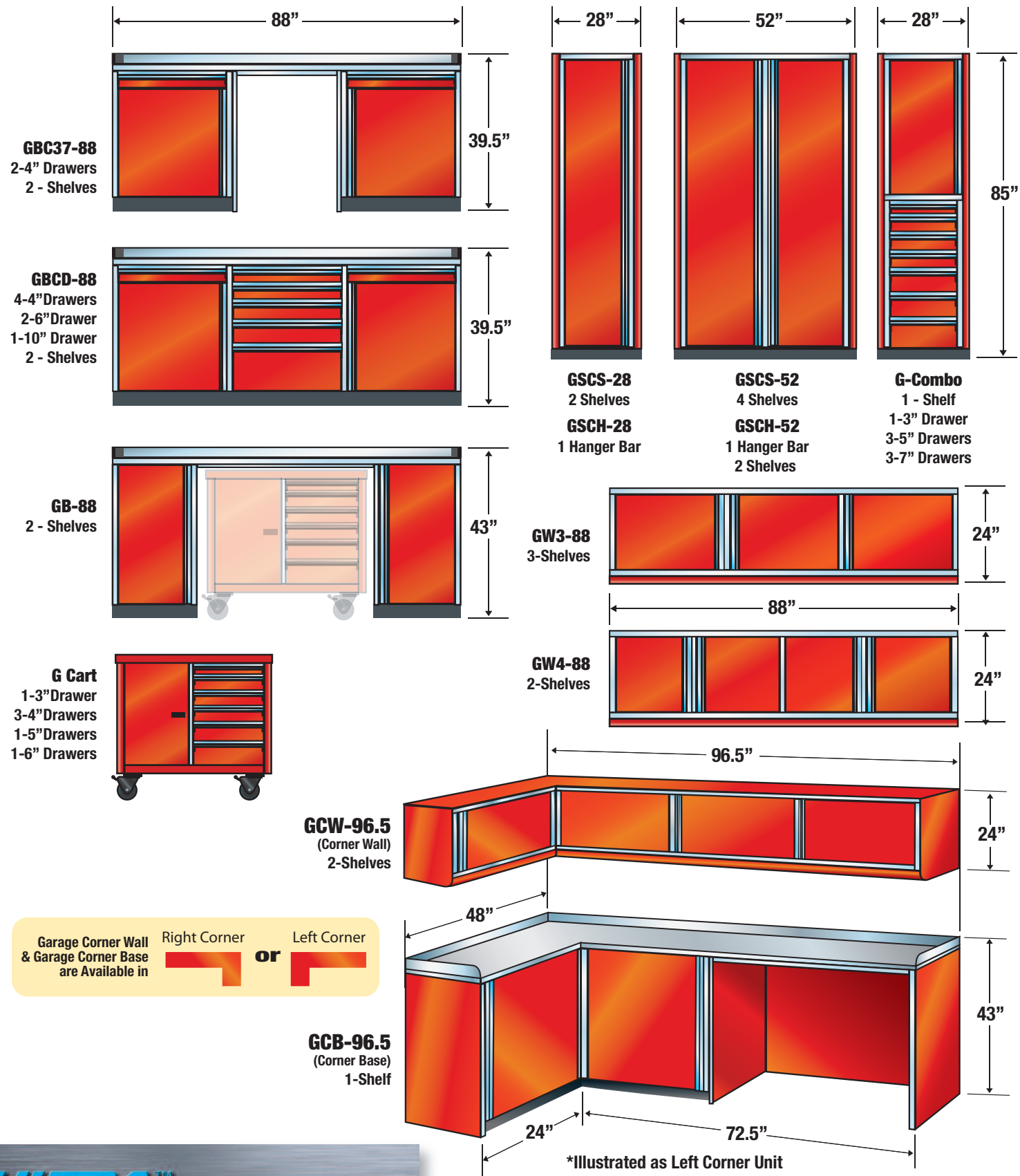


*All Dimensions are Overall Measurements



ULTRA™ LINE Garage



The World's Premium All Aluminum Garage Cabinet

Race tested for function and durability
from the leader in cabinet/drawer
and cart innovation



ULTRA™
LINE
Garage

7501 Commerce Drive • Weston, WI 54476
715-355-8842
www.racrcabinet.com

MotionLatch™
Drawer & Door System
US Patent 6,547,289

GasketLoc™
Counter Top System

MADE IN THE USA

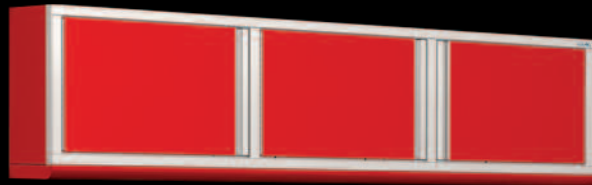
ULTRA™ LINE Garage



The Milwaukee

8' Package

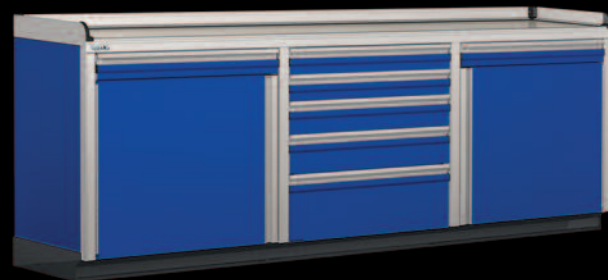
- 1 - Base, **GBC37-88**
(two drawers, two shelves)
- 1 - Wall Cabinet, **GW3-88**



The Baja

8' Package

- 1 - Base, **GBCD-88**
(seven MotionLatch™ drawers)
- 1 - Wall Cabinet, **GW3-88**



The Bonneville

16' Package

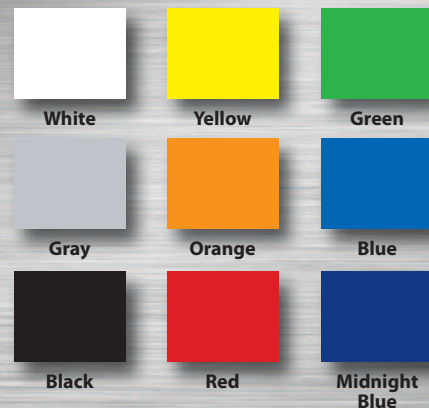
- 1 - Closet, **GSCS-52**
(four shelves)
- 1 - Closet, **GSCH-52**
(one hanger bar, two shelves)
- 1 - Wall Cabinet, **GW4-88**
- 1 - Base Unit, **GB-88**



- All aluminum construction
- Radius edging on closets
- Radius bottom on wall cabinets
- Integrated 3 1/2" toe kick bases
- MotionLatch™ doors and drawers
- GasketLoc™ counter tops
- All cabinets are fully enclosed
- Race proven
- Tough powder coat finish, nine standard colors

Optional custom colors available

Standard Powder Coat Colors



The Knoxville

12' Package

- 1 - Closet, **GSCS-28** *(two shelves)*
- 1 - Closet, **GSCH-28** *(one hanger bar)*
- 1 - Wall Cabinet, **GW4-88**
- 1 - Base Unit, **GBC-88**
- 1 - Caster Cart, **G-Cart**
(six MotionLatch™ drawers)



The Bristol

12' Package

- 1 - Closet, **GSCS-28** *(two shelves)*
- 1 - Closet, **GSCH-28** *(one hanger bar)*
- 1 - Wall Cabinet, **GW4-88**
- 1 - Base Unit, **GB-88**
- 1 - Caster Cart, **G-Cart**
(six MotionLatch™ drawers)

The Lime Rock

Corner Package

- 1 - Closet, **GSCH-28**
(choice of shelves or hanger bar)
- 1 - Corner Base, **GCB-96.5L**, *(left corner)*
- 1 - Corner Wall, **GCW-96.5L**, *(left corner)*
- 1 - Combo Closet, **G-Combo** *(one shelf and seven MotionLatch™ drawers)*
- 1 - Caster Cart, **G-Cart**
(six MotionLatch™ drawers)



Shown as Left Corner Unit

The Indy

16' Package

- 1 - **GSCS-52**
(four shelves)
- 1 - **GSCH-52**
(hanger bar and two shelves)
- 1 - Wall Cabinet, **GW4-88**
- 1 - Base Unit, **GB-88**
- 1 - Caster Cart, **G-Cart**
(six MotionLatch™ drawers)

